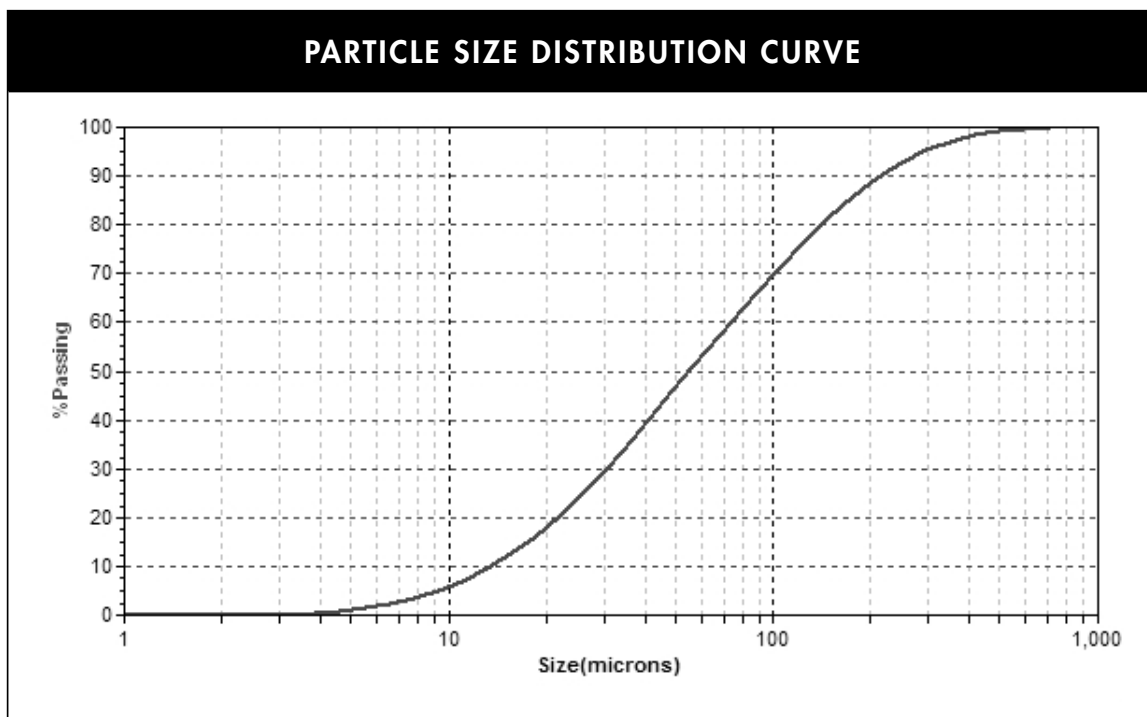
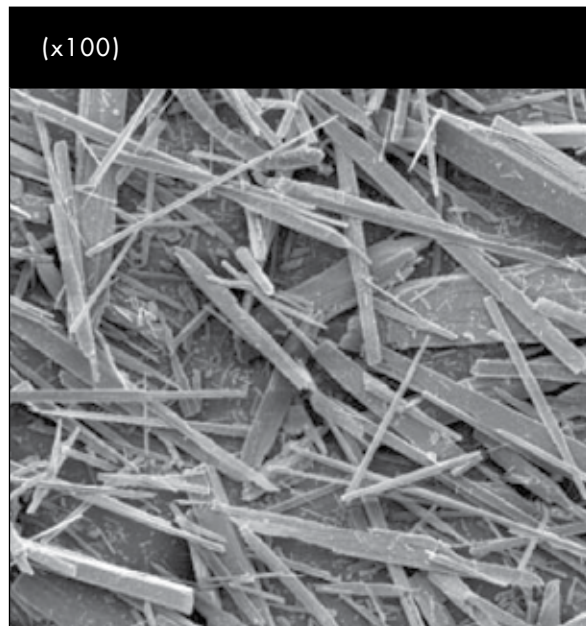


| TYPICAL PROPERTY | TYPICAL VALUE |
|--|---------------|
| G.E. BRIGHTNESS | 82 |
| OIL ABSORPTION (lbs./100 lbs.) | 35 |
| BULK DENSITY | |
| LOOSE (lbs./cu.ft.) | 25.0 |
| (g/cc) | 0.40 |
| TAPPED (lbs./cu.ft.) | 50.0 |
| (g/cc) | 0.80 |
| MEDIAN PARTICLE SIZE (μm)(MICROTRAC) | 55 |
| SURFACE AREA (m ² /g) (BET) | 0.4 |
| MINUS 100 U.S. MESH SCREEN (%) | 99 |
| MOISTURE (%) | 0.02 |
| SEDIMENTATION (CM) | 42 |



nyco[®]
a member of IMERYS

Wollastonite

NYAD G[®]

- State-of-the-art processing operations
- World-class chemical modification technology
- Industry leader
- World-wide distribution network
- Customer-focused global technical support
- Premium quality wollastonite

Wollastonite is a naturally occurring mineral, is non-hazardous, and is not regulated by shipping agencies. Based upon toxicological studies, there is no evidence of any significant health risks to workers

NORTH AMERICAN OPERATION

P.O. Box 368, 803 Mountain View Dr.
Willsboro, New York, 12996-0368 USA
Tel.: 518-963-4262
Fax: 518-963-1110

ISO 9001/14001 CERTIFIED

LATIN AMERICAN OPERATION

Hermosillo, Sonora, Mexico
Tel.: 52-662-289-1000
Fax: 52-662-289-1090

ISO 9001/14001 CERTIFIED

**For any further information,
please contact:**

info.nyco@imerys.com

This data contains general information and describes typical properties only. It is offered for use by persons qualified to determine for themselves the suitability of our products for particular purposes. No guarantee is made or liability assumed, the application of this data and the products described herein being at the sole risk of the user.

| TYPICAL PROPERTIES | VALUE |
|-------------------------------------|------------------------|
| APPEARANCE | WHITE |
| MORPHOLOGY | ACICULAR |
| MOLECULAR WEIGHT | 116 |
| SPECIFIC GRAVITY | 2.9 |
| REFRACTIVE INDEX | 1.63 |
| pH (10% SLURRY) | 9.9 |
| WATER SOLUBILITY (g/100cc) | 0.0095 |
| DENSITY (lbs./cu.ft.) | 181 |
| BULKING VALUE (gal./lbs.) | 0.0413 |
| MOHS HARDNESS | 4.5 |
| COEFFICIENT OF EXPANSION (mm/mm/°C) | 6.5 X 10 ⁻⁶ |
| MELTING POINT (°C) - theoretical | 1540 |
| MELTING POINT (°C) -by ASTM D1857 | 1410 |

CHEMICAL COMPOSITION: CaSiO₃

| COMPONENT | TYPICAL VALUE (%) |
|--------------------------------|-------------------|
| CaO | 46.36 |
| SiO ₂ | 51.60 |
| Fe ₂ O ₃ | 0.77 |
| Al ₂ O ₃ | 0.40 |
| MnO | 0.15 |
| MgO | 0.15 |
| TiO ₂ | 0.05 |
| K ₂ O | 0.02 |
| Wt. Loss (1000°C) | 0.50 |